

## HyBase V8

Operating table

# Versatility beyond Expectation





With increasingly complex surgical procedures, today's surgical environment requires a table that instantly adapts to all the versatility to provide the highest level of care.

- An extreme load capacity of up to 460 kg.
- The longitudinal shift of up to 350 mm, free access to C-arm.
- 595 mm lowest table position for neurosurgery, 1,095 mm highest table position for orthopedics.
- Intelligent Collision Protection System to stop the table movement before collision occurs
- 18 electric movements, such as powered body elevator, powered leg plates and E-drive function, adapting to various surgical needs.
- Bluetooth hand control for unobstructed control in operating rooms







# Flexibility for multiple disciplines

Meeting the needs of different surgical positions

## Modular Design

The modular design of the tabletop is tailored for various surgical discipline needs, which can also lower the cost for hospitals as they only need to buy the specific module, instead of a new table, for an additional surgical type.





# Flexibility for multiple disciplines

Cater to more and more endoscopic surgeries

## Higher Imaging Quality

With the development of minimally invasive surgery (MIS), requirement for better images during procedures arises. HyBase V8 allows clear and high-quality images that are crucial for today's MIS, cardiothoracic, orthopedic, and neurosurgical procedures.

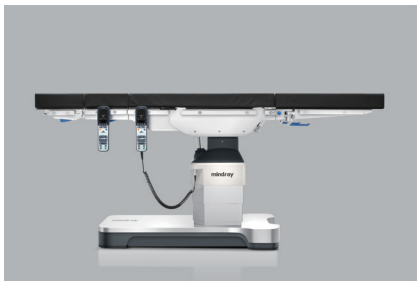
## Huge Imaging Access



(Optional) Carbon fiber operating plate provides extreme imaging space.

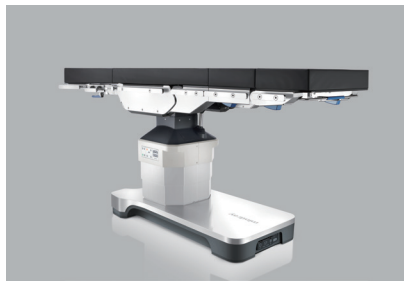
The longitudinal shift of up to 350 mm and the ultra-thin base allows the C-arm to descend to the lowest position and rotate over 360°without interfering with the base or frame. The carbon fiber tabletop ensures good radiolucent imaging. With a wide imaging access and better radiolucency, HyBase V8 is an optimal solution for cardiovascular surgery.

### Bidirectional longitudinal shift



Head-end shift:190 mm  
Foot-end shift:160 mm

### Ultra-thin base



120 mm ultra-thin base allows 100% access for the mainstream C-arm.

### Carbon fiber tabletop



Radiolucent carbon fiber tabletop provides better imaging.

## Optimal stability

With a load capacity of up to 460 kg



Both normal and reverse patient positions can be set up. Trendelenburg and tilt positions allow more standing space.



Electric brake provides higher stability.

## Better exposure to operating field

Powered body elevator and flex position can reduce the pressure injury and expose the kidney area completely.



Smart backlit keypad makes operating table status and function keys visible in the dark.



IPX5 protection against water jets from any direction

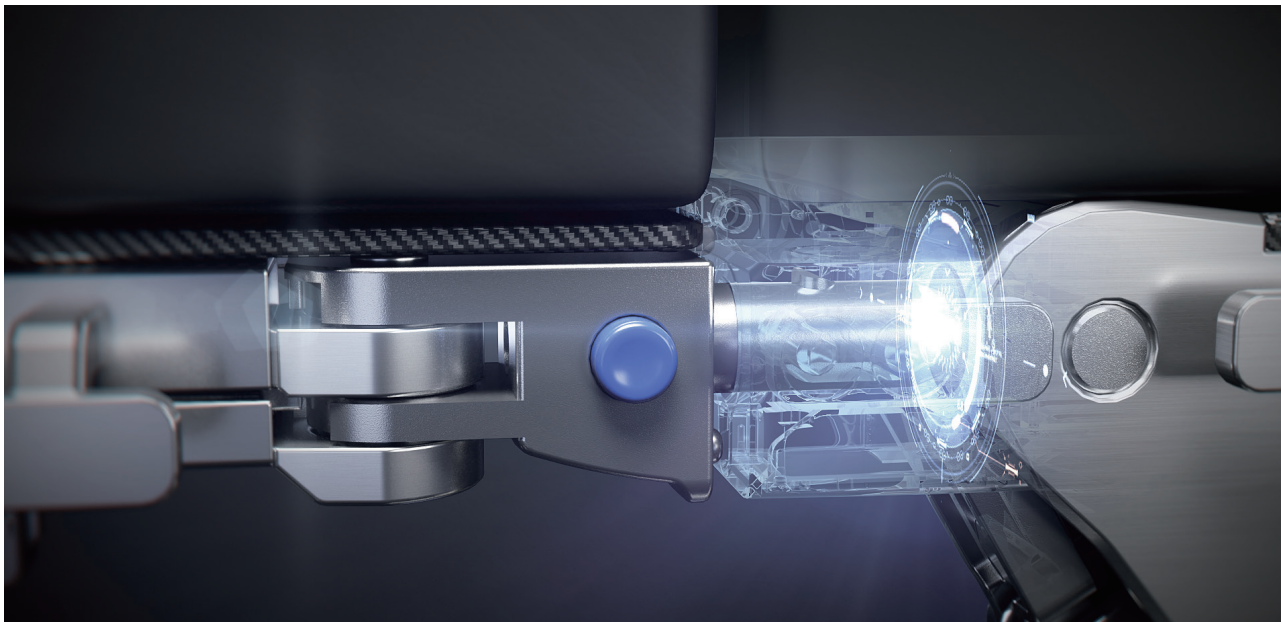


# Safety for various positions

Enhance patient safety

## Module Recognition System

A lower back plate and small leg plates are configured with the Module Recognition System to avoid collision between modules and the floor.



## Color-coded indication technology

During the tilt or slope adjustment, a color-coded indicator appears on the screen to show the angle and issue a timely warning when it comes to excessive Trendelenburg and reverse Trendelenburg positions.



## Intelligent Collision Protection System

The Intelligent Collision Protection System monitors the positions of the table elements during movement to avoid collision by the Module Recognition System.

This system also prevents the leg plate from colliding with solid objects when the table is covered with sterile surgical sheets.



## Multi-layer Decompression Pad

With the Special Foam Core pad and multilayer design, HyBase V8 provides excellent pressure distribution to prevent decubitus ulcers, reduce postoperative health risk, and speed up patient recovery. The ultrasonically-welded pad is made of GORE-TEX material, making it waterproof and easy to clean.

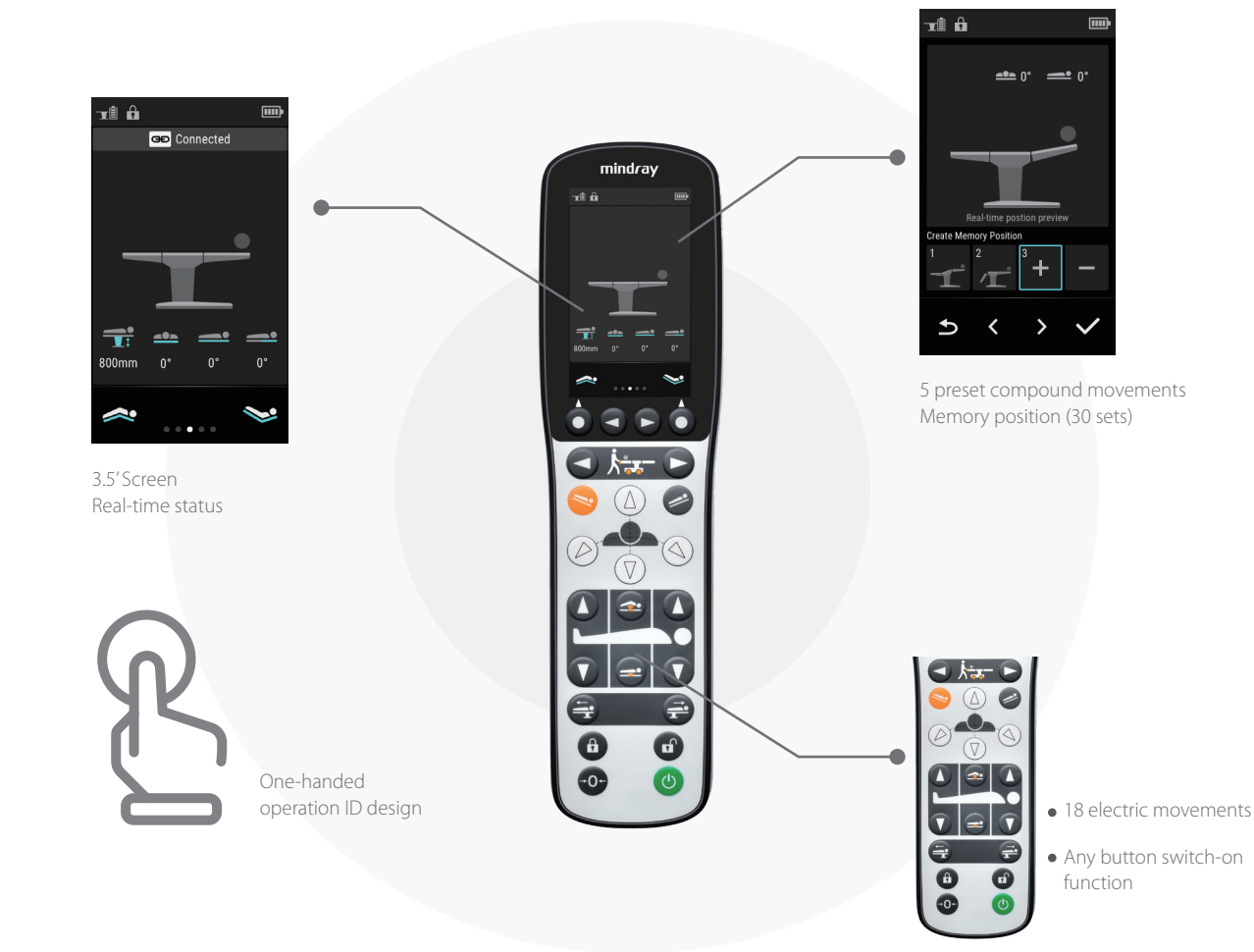




# Efficient in every step

Improve efficiency in the operating room

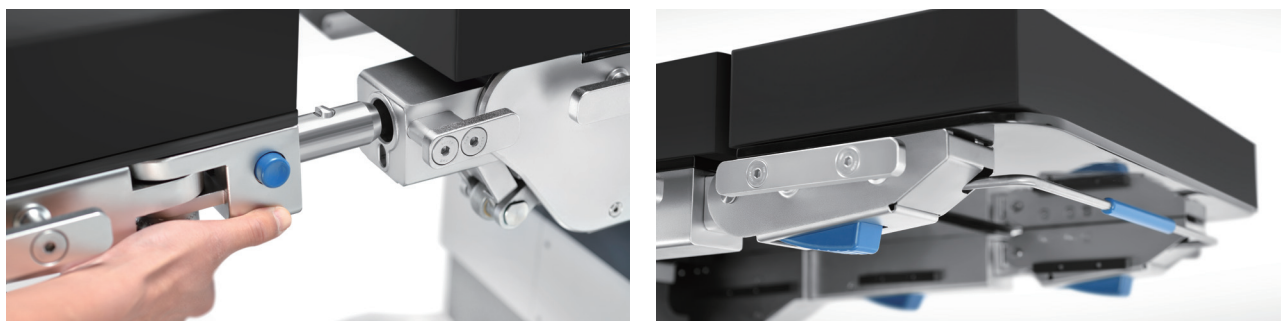
## Intuitive icons with reasonable layouts



Corded/wireless hand control

5 control options including corded hand control, wireless hand control, override panel, foot switch and remote control to improve the workflow efficiency

## Easy to use



One-button design

With the One-button design, it's convenient to remove or install the head and leg plates.

## Easy to move



Optional E-drive function for easy patient transport into and out of the OR supplied by a 5th electric castor.

Four double-swivel castors make it easier to move the table toward any directions.

## Easy to clean



Bellows-free design

Flat design enables convenient cleaning and great infection control.