

## HyBase V9

operating table

Versatility beyond Expectation





**With increasingly complex surgical procedures, today's surgical environment requires a table that instantly adapts to all the versatility to provide the highest level of care.**

- An extreme load capacity of up to 570 kg.
- All positions are permitted up to overall load of 275 kg.
- The longitudinal shift up to 480mm for free to access to C-arm.
- 595 mm lowest table position for neurosurgery, while 1,095 mm highest table position for orthopedics.
- Intelligent Collision Protection System to stop the table movement collision occurs.
- 20 electric movements, such as powered body elevator, electric leg plates adjustable individually and E-drive function, adapting to various surgical needs.
- Bluetooth hand control for unobstructed control in operating room.
- Triple-layer decompression pad to redistribute the patient's weight.







## Flexibility for Multiple Disciplines

### Meeting the needs of different surgical positions

## Modular Design

The modular design of the tabletop is tailored for various surgical discipline needs, which can also lower the cost for hospitals as they only need to buy the specific module, instead of a new table, for an additional surgical type.



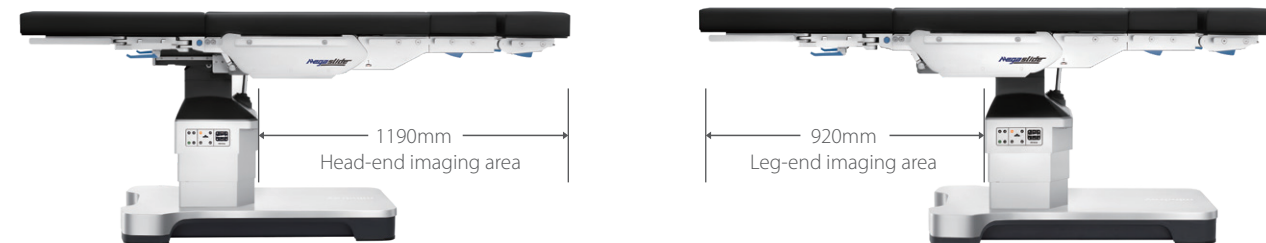


# Excellent Perspective Space

## Higher Imaging Quality

With the development of minimally invasive surgery (MIS), requirement for better images during procedures arises. HyBase V9 allows clear and high-quality images that are crucial for today's MIS, cardiothoracic, orthopedic, and neurosurgical procedures.

## Huge Imaging Access



The longitudinal shift of up to 480mm and the ultra-thin base allows the C-arm to descend to the lowest position and rotate over 360° without interfering with the base or frame. The carbon fiber tabletop ensures good radiolucent imaging.

With a wide imaging access and better radiolucency, HyBase V9 is an optimal solution for cardiovascular surgery.

## Light Indication Function

The two sides of the light correspond to the width of the column, facilitating obtaining the relative position of the column in the scenario where the sterile sheet is covered, and improving the patient position and C-arm fluoroscopy efficiency.



(Optional) Carbon fiber operating plate provides extreme imaging space

## Orthopaedic Expert at Lower Extremity Traction

Work together with the HyExtent V series orthopedic traction frame, HyBase V9 provides efficient and accurate solution for lower limb traction.



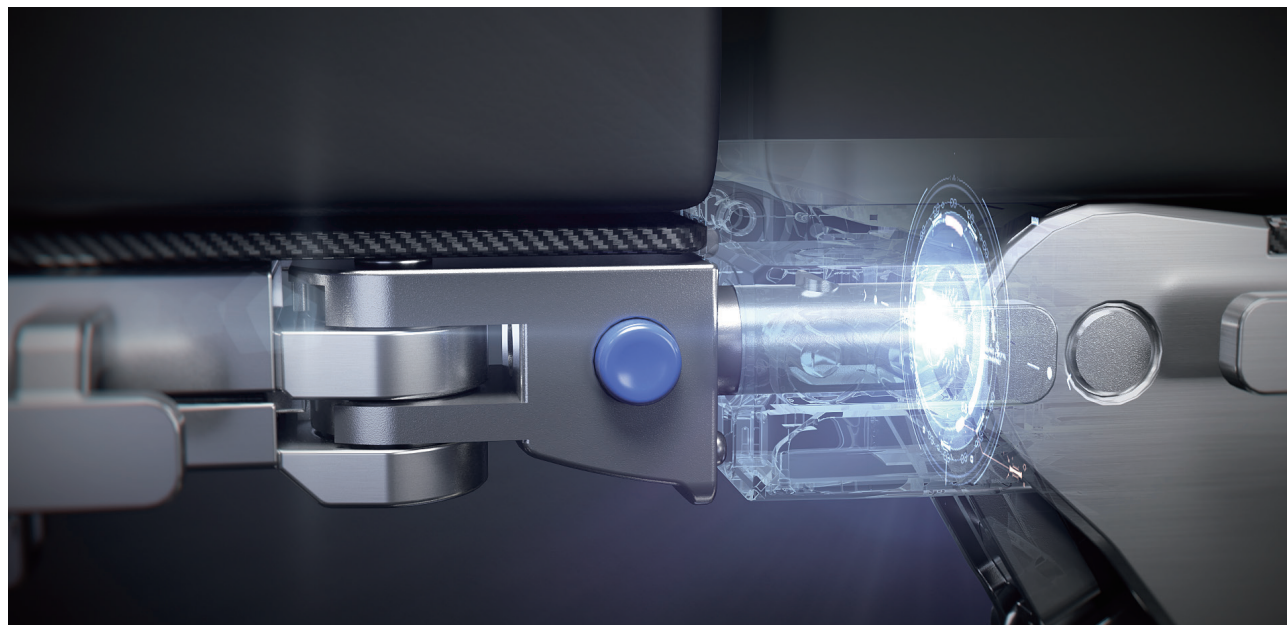
HyExtent-V series orthopedic traction frame, the utility model provides various and precised traction solution for lower limb traction, which provides sufficient access space and 360 degrees of unobstructed perspective for C-arm. The efficiently disassembly and assembly of cantilever and the unique Orthopaedic Extension Device Mode make it become a good assistant trusted by medical personnel.

# Safety for Various Positions

Enhance patient safety

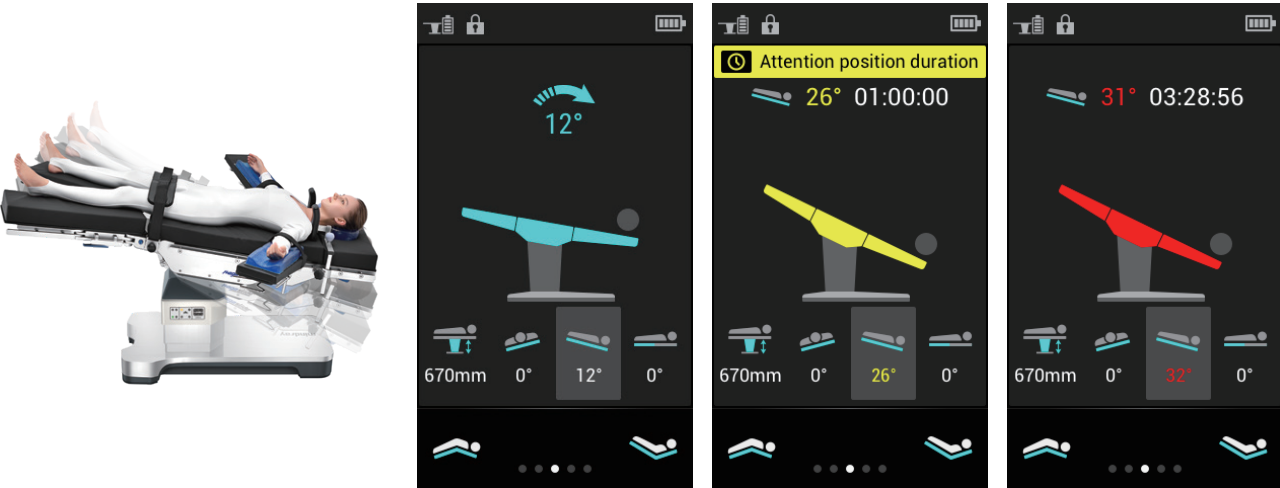
## Module Recognition System

A lower back plate and small leg plates are configured with the Module Recognition System to avoid collision between modules and the floor.



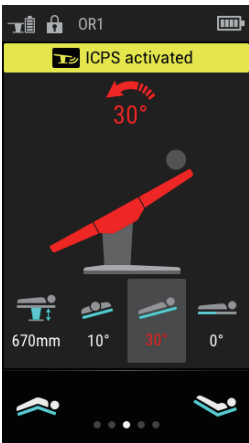
## Color-coded Indication Technology

During the tilt or slope adjustment, a color-coded indicator appears on the screen to show the angle and issue a timely warning when it comes to excessive Trendelenburg and reverse Trendelenburg positions.



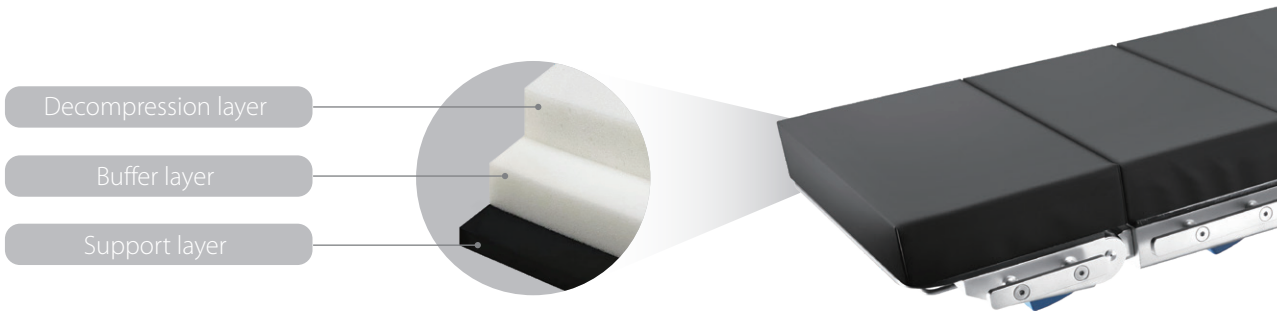
## Intelligent Collision Protection System

The Intelligent Collision Protection System monitors the positions of the table elements during movement to avoid collision by the Module Recognition System. This system also prevents the leg plate from colliding with solid objects when the table is covered with sterile surgical sheets.



## Multi-layer Decompression Pad

Mindray's HyBase V series operating table introduces a new decompression mattress. The multi-layer composite mattress technology fully considers the body shape of the human and can be applied to patients with BMI between 17-35. Especially for heavy patients, the buffer layer can greatly reduce the contact between the body and the support layer, improve the support performance and further balance the pressure.





# Efficiency in Every Step

Improve efficiency in the operating room

## Simultaneous Movements

Multiple joints operate simultaneously to increase positioning efficiency and reduce patient sliding.



## Bidirectional Longitudinal Shift



Head-end shift:320mm    Foot-end shift:160mm

## High Waterproof Rating



IPX5 protection against water jets from any direction.

## Electric Leg Plates



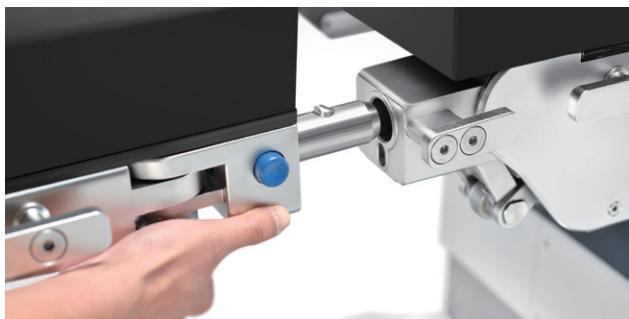
Adjustable individually or synchronously

## High Stability



Electrical base brake provide high stability

## Easy to Use



One-button design

With the One-button design, it's convenient to remove or install the head and leg plates.



Color instruction for manipulative part

## Easy to Move



Optional E-drive function for easy patient transport into and out of the OR supplied by a 5th electric castor.



Four double-swivel castors make it easier to move the table toward any directions.

## Easy to Clean



Bellows-free design

Flat design enables convenient cleaning and great infection control.



Flat stainless-steel base cover